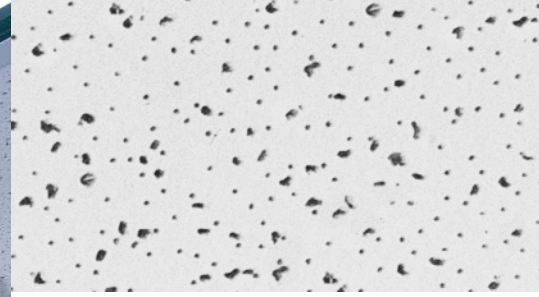




# Radars<sup>TM</sup> ClimaPlus<sup>TM</sup>



Medium textured panel



#### Features and Benefits

- Non-directional pattern with a fresh, clean appearance offers fast, efficient installation.
- Select items available in Standard Colors.
- CLIMAPLUS<sup>TM</sup> 15-year System Warranty to withstand conditions up to 104 °F (40 °C)/90% relative humidity without visible sag when used with USG's DONN<sup>®</sup> Brand Suspension Systems.
- Optional FIRECODE<sup>TM</sup> formulation designed to meet life safety codes.

#### Applications

- Schools
- Corridors
- Lobby areas
- Offices
- Retail stores

# Radars™ ClimaPlus™

Acoustical Ceilings

Technical Service 800 USG.4YOU  
Web Site www.usg.com  
Samples/Literature 888 874.2450  
Samples/Literature Fax 888 874.2348  
Customer Service 800 950.3839  
Literature Number SC2127



RADAR™  
CLIMAPLUS™ Panels

Edge	Panel Size		Item No.  UL Classified				Color <sup>4</sup>	Grid Options	Recycled Content <sup>5</sup>	Panel Cost	
	Imperial	Metric (mm) <sup>1</sup>	Class <sup>2</sup>	Imperial	NRC	CAC Min.					LR <sup>3</sup>
(SQ) (SLT) (FLB)	2' x2' x5/8"	600x600x15	Class A	2210	.55	33	.84	White Standard	A, B	38%	\$
	2' x2' x5/8"		Class A	2215	.55	35	.84	White	A	50%	\$
	2' x4' x5/8"	600x1200x15	Class A	2410	.55	35	.84	White Standard	A	38%	\$
	2' x4' x5/8"		Class A	2415	.55	35	.84	White Flat Black	A	50%	\$
	2' x2' x5/8"	600x600x15	Class A	2220	.55	35	.84	White Standard Flat Black not available	C	38%	\$
	2' x2' x5/8"		Class A	2225	.55	35	.84	White	C	50%	\$
	2' x4' x5/8"		Class A	2420	.55	35	.84	White	C	38%	\$
	2' x4' x5/8"		Class A	2425	.55	35	.84	White	C	50%	\$
(SF) <sup>6</sup>	12' x12' x5/8"		Class A	2570	.45 <sup>7</sup>	35	.84	White	Adhesive Staple	38%	\$\$\$

Grid Profile Options	A DONN® DX <sup>®</sup> / DXL™	B CENTRICITEE™	C DONN DX/DXL	D CENTRICITEE	E CENTRICITEE DXLT	F FINELINE® 1/8	G FINELINE	H FINELINE DXLF

**ASTM E1264 classification**  
Type III, Form 2, Pattern CD  
**ASTM E84 surface burning characteristics**  
Class A  
Flame spread: 25  
Smoke developed: 10

**Weight**  
0.69-0.81 lb./ft.<sup>2</sup> (Class A panels and tile)  
1.15 lb./ft.<sup>2</sup> (FIRECODE™ panels)  
**Thermal resistance**  
R-1.4 (5/8" panels and tile)

**Maximum backloading**  
See warranty for details.  
**Maintenance**  
Can be cleaned easily with a soft brush or vacuum.

**Footnotes**  
1. Metric available in White only.  
2. Fire-rated items: see UL design details.  
3. LR values are shown as averages.  
4. See color selectors for more information.  
5. For details, see the Recycled Content selector.  
6. SF = staple flange.  
7. Not UL Classified for acoustics.

**SAFETY FIRST!**  
Follow good safety practices. Read material safety data sheets and related literature on products before specification and/or installation.



Manufactured by  
USG Interiors, Inc.  
125 South Franklin Street  
Chicago, IL 60606

The following are trademarks of USG Interiors, Inc. or a related company:  
CENTRICITEE, CLIMAPLUS, DONN, DX, DXL, FINELINE, FIRECODE, RADAR, USG.

SC2127/rev. 6-04  
© 2004, USG Interiors, Inc.  
Printed in U.S.A.