

# Eclipse™ *ClimaPlus*™



10

Year Availability

76575, 76775, 76975, 78575, 78775

HRC

High Recycled Content



ECLIPSE Panels with *CLIMAPLUS* Superior Performance/  
DONN FINELINE DXF™ Suspension System

### LEED Credits

Total Recycled Content: 77% – 85%  
LEED Recycled Content Contribution: 39% – 50%  
*CLIMAPLUS* Superior Performance for Mold and Mildew

MR				EQ		
Waste Reduction <sup>1</sup>	Recycled Content	Regional Materials <sup>2</sup>	Rapidly Renewable Materials	Low-Emitting Materials	Daylight and Views	Acoustical Performance
●	●	●	●	●	●	●

### Features and Benefits

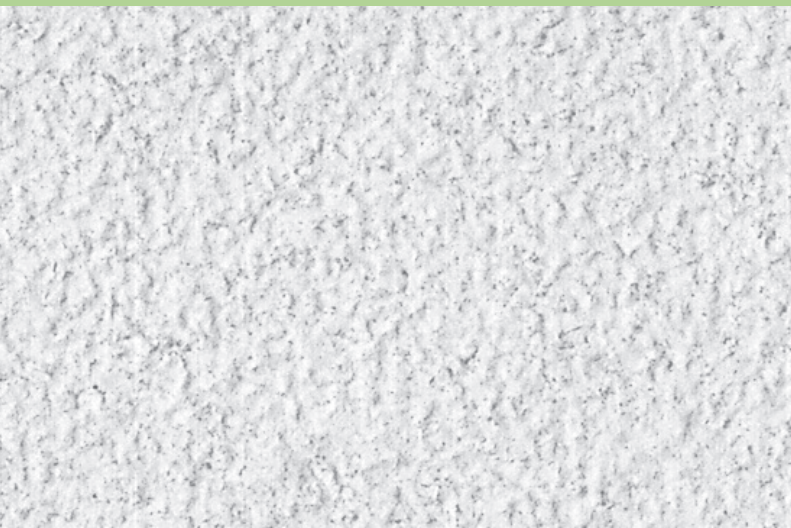
- Elegant, fine-textured visual
- Excellent noise reduction (NRC - .70)
- Optional FIRECODE™ formulation
- Available in Optimized Recycled Content formulations to help maximize LEED recycled content contribution
- *CLIMAPLUS* 30-year lifetime system warranty against visible sag, mold and mildew

### Applications

- Offices
- Conference Areas
- Healthcare – HIPAA Requirements
- Retail Stores

### Substrate

- X-Technology mineral fiber



Fine-textured panel

### To order samples, go to [usg.com](http://usg.com)

See individual items for color availability.

#### Standard Colors



White



Parchment 103



Manila 246



Beige 142



Straw 143



Sandstone 090



Taupe 107



Silverstone 052



Mist 053

**30**

Year System Warranty  
 – No visible sag  
 – Mold/mildew protection

**ECLIPSE CLIMAPLUS Panels**

Edge	Panel Size	Class	Item No.	UL Classified			Color	Grid Options	VOC <sup>9</sup> Emissions	Anti-Mold & Mildew	Recycled Content				Panel Cost	
				NRC	CAC Min. <sup>3</sup>	LR <sup>4</sup>					Total	PC	PI	LEED RC		
ECLIPSE CLIMAPLUS Panels	SQ	2'x2'x3/4"	Class A	<b>76575</b>	.70	35	.86	White	A, B, C	Low		77%	0%	77%	39%	<b>\$\$</b>
		2'x2'x3/4"	Class A	<b>76575HRC</b>	.70	35	.85	White	A, B, C	Low		82%	18%	64%	50%	<b>\$\$</b>
		2'x4'x3/4"	Class A	<b>78575</b>	.70	35	.86	White	A, B	Low		77%	0%	77%	39%	<b>\$\$</b>
		2'x4'x3/4"	Class A	<b>78575HRC</b>	.70	35	.85	White	A, B	Low		82%	18%	64%	50%	<b>\$\$</b>
	SLT	2'x2'x3/4"	Class A	<b>76775</b>	.70	35	.86	White	D	Low		77%	0%	77%	39%	<b>\$\$</b>
		2'x2'x3/4"	Class A	<b>76775HRC</b>	.70	35	.85	White	D	Low		82%	18%	64%	50%	<b>\$\$</b>
		600x600x19	Class A	<b>ME76775</b>	.70	35	.86	White	D	Low		77%	0%	77%	39%	<b>\$\$</b>
		2'x2'x3/4"		<b>76779</b>	.60	35	.86	White	D	Low		62%	0%	62%	31%	<b>\$\$</b>
	FLB	2'x4'x3/4"	Class A	<b>78775</b>	.70	35	.86	White	D	Low		77%	0%	77%	39%	<b>\$\$</b>
		2'x4'x3/4"	Class A	<b>78775HRC</b>	.70	35	.85	White	D	Low		82%	18%	64%	50%	<b>\$\$</b>
		600x600x19	Class A	<b>ME76975</b>	.70	35	.86	White	E, F, G, J	Low		77%	0%	77%	39%	<b>\$\$</b>
		2'x2'x3/4"		<b>76975</b>	.60	35	.86	White	F, I	Low		62%	0%	62%	31%	<b>\$\$</b>
ECLIPSE CLIMAPLUS Tile <sup>7,8</sup>	BESK	2'x4'x3/4"	Class A	<b>78975</b>	.70	35	.86	White	E, F, G, J	Low		77%	0%	77%	39%	<b>\$\$</b>
		2'x4'x3/4"	Class A	<b>78975HRC</b>	.70	35	.85	White	E, F, G, J	Low		82%	18%	64%	50%	<b>\$\$</b>
		600x600x19	Class A	<b>ME76975</b>	.70	35	.86	White	E, F, G, J	Low		77%	0%	77%	39%	<b>\$\$</b>
		2'x2'x3/4"		<b>76975</b>	.60	35	.86	White	F, I	Low		62%	0%	62%	31%	<b>\$\$</b>

**Legend**

**Low Emissions (VOC Class)**

Classified as low-emitting per standards established by the Collaborative for High Performance Schools (CHPS), following California Specification 01350 testing methods.

**CLIMAPLUS Superior Performance<sup>9</sup>**

Contains a broad-spectrum antimicrobial treatment on the face and back of the panel that provides guaranteed resistance against the growth of mold and mildew.

**High Recycled Content**

Classified as containing greater than 50% total recycled content. Total recycled content is based on product composition of post-consumer and pre-consumer (post-industrial) recycled content per FTC guidelines.

**Grid Profile Options**

A	B	C	D	E	F	G	H	I	J	K
DX <sup>®</sup> /DXL™	DXW™	CENTRICITEE™ DXT	DX/DXL	CENTRICITEE DXT	CENTRICITEE DXLT	FINELINE <sup>®</sup> DXF	FINELINE 1/8 DXFF	FINELINE DXLF	IDENTITEE™ DXI™	DX/DXL Concealed

**Physical Data/ Footnotes**

**Product literature**  
 Data sheet: SC1812

**ASTM E1264 classification**  
 Type III, Form 1, Pattern EI

**ASTM E84 surface burning characteristics**  
 Class A  
 Flame spread: 25  
 Smoke developed: 50

**Imperial weight**  
 .97 lb./sq. ft. (Class A panels and tile)  
 1.2 lb./sq. ft. (FIRECODE panels)

**Metric weight**  
 5.07 kg/m<sup>2</sup> (Class A panels)

**Thermal resistance**  
 R-2.0 (Class A)  
 R-1.9 (FIRECODE)

**Maximum backloading**  
 See Warranty for details.

**Maintenance**  
 Can be cleaned easily with a soft brush or vacuum.

**Footnotes**

1. Applies when USG acoustical ceilings recycling program is utilized.
2. For details, see LEED report generator at [usgdesignstudio.com](http://usgdesignstudio.com).
3. Metric available in white only.
4. Fire-rated items: see UL design details.
5. LR values shown as averages.
6. See Colors selector for more information. Metric: white only.
7. Contact USG for adhesive recommendations for 12"x12" glue-up applications.
8. Not UL Classified for acoustics.

9. Panel face and back surfaces treated with a proprietary, broad-spectrum antimicrobial standard formulation that inhibits and retards the growth of mold and mildew. For details, see *Ceiling Systems Limited Warranty Commercial Applications (SC2102)* and *CLIMAPLUS Ceilings Certification of Performance (SC2451)*.
10. No formaldehyde is added to any ingredient or during the manufacturing process for all mineral fiber acoustical ceiling products manufactured by USG Interiors, LLC.

